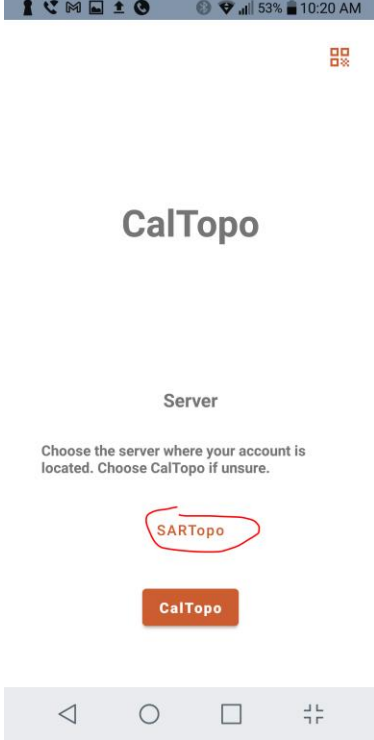
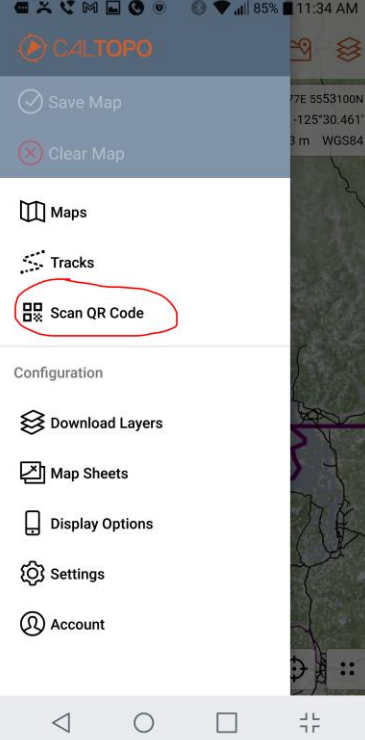


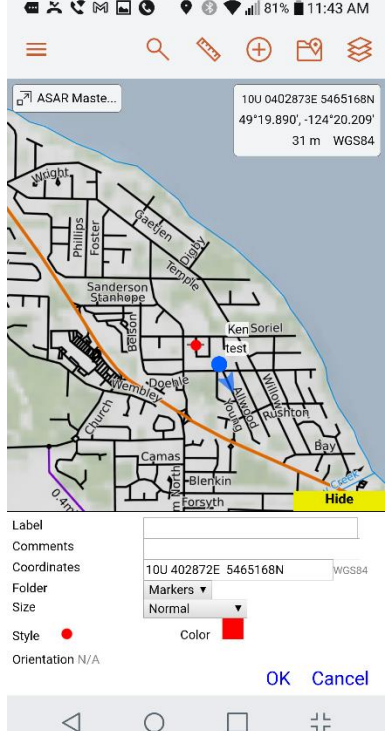
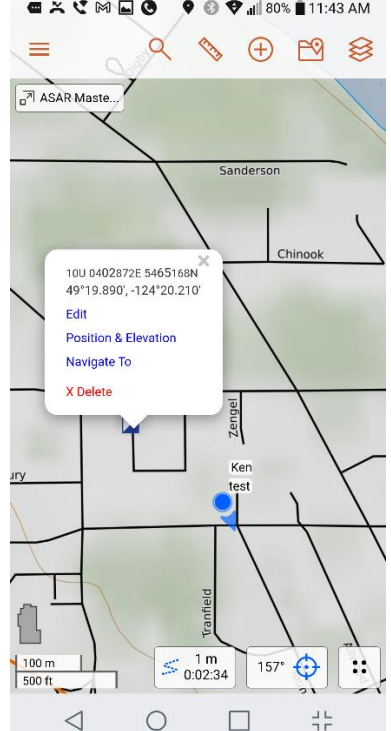


ASAR Caltopo cheat sheet

Install app from Google Play or Apple store

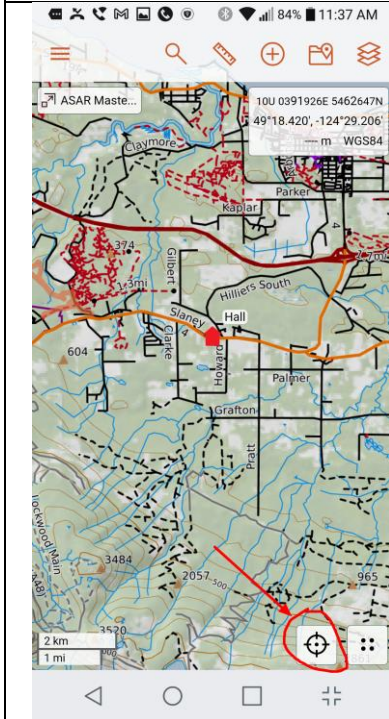
<p>Start app and Sign in with Google or Facebook. Make sure you select SARTopo and not CalTopo.</p>	<p>Load the ASAR Master. Click the menu button (three bars) Select Scan QR Code</p>	<p>Scan the QR code below</p>
 <p>The screenshot shows the CalTopo app's home screen. At the top, there's a status bar with the time 10:20 AM and 53% battery. The app title 'CalTopo' is centered. Below it, there's a 'Server' section with the text 'Choose the server where your account is located. Choose CalTopo if unsure.' Two buttons are visible: 'SARTopo' (circled in red) and 'CalTopo'.</p>	 <p>The screenshot shows the CalTopo app's menu. The menu items are: Save Map, Clear Map, Maps, Tracks, Scan QR Code (circled in red), Configuration, Download Layers, Map Sheets, Display Options, Settings, and Account. The background shows a map with coordinates 7E 5553100N and -125°30.461'.</p>	<p>SARTopo Map</p>  <p>B4QA - Update</p> <p>Note: You don't have to load the ASAR map to do these things – the default map will also work, but your tracks and markers won't be visible to others.</p>

Markers

Add a marker:	Enter properties:	Edit or delete:
<ul style="list-style-type: none"> • Long press 	<ul style="list-style-type: none"> • Color, • Style, • Size 	<ul style="list-style-type: none"> • Click marker • Select edit or delete 

Tracks

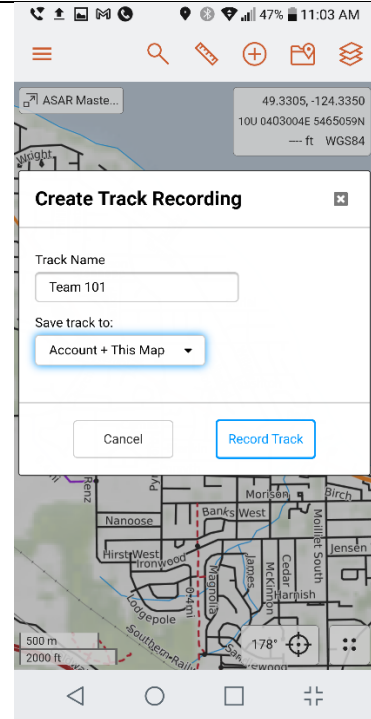
Click location icon to enable GPS



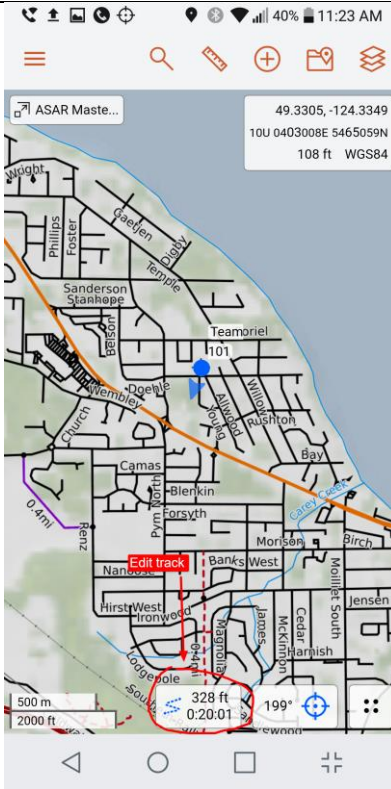

Click four dots
Select Record track



Enter track name
Click Record Track
Choose This map for your own use
Choose Account + this map to show
on ASAR master map



Edit or finish a track

Click the track button at the bottom of the screen	Select edit, show or finish	
 <p>This screenshot shows a mobile map application interface. At the top, there is a status bar with icons for signal, Wi-Fi, and battery (40%), and the time 11:23 AM. Below the status bar is a navigation bar with icons for menu, search, track, add, location, and layers. The main map area shows a street grid with a blue track. A red dashed box highlights a red button labeled 'Edit track' at the bottom of the screen. A white information box at the top right of the map displays coordinates: 49.3305, -124.3349, 10U 0403008E 5465059N, 108 ft WGS84. At the bottom, there is a scale bar (500 m / 2000 ft), a distance of 328 ft, a time of 0:20:01, and a compass showing 199°.</p>	 <p>This screenshot shows the same mobile map application interface as the previous one, but with a pop-up menu open for 'Team 101'. The status bar now shows 46% battery and the time 11:04 AM. The information box at the top right of the map displays coordinates: 49.3306, -124.3349, 10U 0403009E 5465066N, 108 ft WGS84. The pop-up menu at the bottom of the screen has three buttons: 'Edit' (with a pencil icon), 'Show on Map' (with a checkmark icon), and 'Finish' (with a flag icon). The bottom status bar shows a scale bar (500 m / 2000 ft), a distance of 1 ft, a time of 0:00:25, and a compass showing 61°.</p>	